
B U R R O W S

P R I N T S

fine art dealers

www.burrowsprints.com

7 September 2018

About Burrows Prints

Burrows Prints is a small and successful company dealing since 1991 in fine art prints and other pictures to private and commercial clients.

The service we offer is comprehensive as a result of our interest in visual art in general and a particular interest in print making.

Our stock includes prints using virtually every technique, from engravings to block print. Both coloured and 'black & white' - my particular favourite.

Over the years we have learnt our clients likes and dislikes and provide images for their personal collections. On occasions we have worked with interior designers to provide a mixed collection in a private house as well as pictures for hotels and other businesses.

Modern offset litho prints and latterly giclee prints, predominantly limited editions are also available from stock. Both facsimiles of oil and water colour or original signed artist proofed works.

We present the prints in their current aged state with the natural discolouration and foxing, we will on request and for a small fee, restore them (as much as possible) to their original state.

In addition to selling fine art prints we are pleased to provide other valued services.

We have helped many businesses, especially hotels and others in the hospitality sector to dress their premises with both fine art and decorative images. A modest investment in pictures against other capital costs can result in disproportionate income. Both the people working in those premises as well as your clients will feel empowered and as a result happier to be there, earning and spending more.

To private clients we can offer the same service, but have also advised on reframing and rehangng existing familiar pictures already in their collection, creating a refreshed, revitalised appreciation for them and their visitors.

Lastly our stock is not large and does not represent all genres, never-the-less we can, within reason, source any required print works and works in other media from our extensive contacts cultivated over the years. Although we specialise in fine art print at home the walls are covered with not only prints but oils, acrylics, watercolours and photographs, all have their place.

Roy Burrows

INDEX

King's Colledge to Wit- a practical Essay (<i>by unknown</i>)	1
The Field of Battersea (<i>by unknown</i>)	2
The South Prospect of Scarborough in the county of York (<i>by unknown</i>)	3
Ventnor Esplanade (<i>by unknown</i>)	4
View of Blackfriars Bridge (<i>by unknown</i>)	5
View of Buckingham House (<i>by unknown</i>)	6
View of Chelsea Hospital (<i>by unknown</i>)	7
View of Westminster Bridge (<i>by unknown</i>)	8
Beware of the Dog (<i>by Ernest Aris</i>)	9
Hedgerow Fairy. (<i>by Cicely Mary Barker</i>)	10
Ouragan Ventis (<i>by F Boulzen</i>)	11
Conviviality at Bob Sawyers (<i>by Hablot Knight Browne</i>)	12
Mrs Muzzle's Kitchen (<i>by Hablot Knight Browne</i>)	13
untitled (<i>by Miles Burkett-Foster</i>)	14
untitled (<i>by Miles Burkett-Foster</i>)	15
Hadleigh Castle near the Nore (<i>by John Constable RA</i>)	16
The Garland Sculpture, Isle of Wight (<i>by Peter Davies</i>)	17
Early Dentistry (<i>by Ger. Doni</i>)	18
The Boys Arch (<i>by Robert Charles Dudley</i>)	19
Marshmallows (<i>by Gil Elvgren</i>)	20
Fish and Asparagus (<i>by Annabel Fairfax SWA</i>)	21
Teapot and White Orchids (<i>by Annabel Fairfax SWA</i>)	22
Tulips and Waders (<i>by Annabel Fairfax SWA</i>)	23
Waders & Cherries (<i>by Annabel Fairfax SWA</i>)	24
Fortress, Les Baux de Provence (<i>by Joseph Fereday RE</i>)	25
Vitrolle Provence (<i>by Joseph Fereday RE</i>)	26
The Gardner (<i>by Anne Gillmore Carter</i>)	27
Belgrave Road, Ventnor (<i>by William Gray Snr.</i>)	28
Off Yarmouth (<i>by William Gray Snr.</i>)	29
Sandown Bay (<i>by William Gray Snr.</i>)	30
Sandown Bay (<i>by William Gray Snr.</i>)	31
Sunset Ventnor Cove (<i>by William Gray Snr.</i>)	32
Mr Garrick in Richard 3rd (<i>by Hogarth</i>)	33
Charles Wingfield Knight (<i>by Hans Holbein</i>)	34
John Colet Dean of St. Paul's (<i>by Hans Holbein</i>)	35
King Henry Eight (<i>by Hans Holbein</i>)	36
Nicholas Borbon, Poet (<i>by Hans Holbein</i>)	37
untitled (<i>by John Kay of Edinburgh</i>)	38
untitled (<i>by John Kay of Edinburgh</i>)	39
Untitled (<i>by John Kay of Edinburgh</i>)	40
Untitled (<i>by John Kay of Edinburgh</i>)	41
Old Undercliff Road (<i>by C J Knox</i>)	42
Old Undercliff Road (<i>by C J Knox</i>)	43
Midsummer Nights Dream (<i>by Sir Edwin Landseer FRA</i>)	44
Beachy Head (<i>by Rowland Langmaid</i>)	45
Self portrait of Sir Thomas Lawrence (<i>by Sir Thomas Lawrence</i>)	46
Albert (<i>by Margaret Maidment</i>)	47
Cards (<i>by Margaret Maidment</i>)	48
Cards (<i>by Margaret Maidment</i>)	49
Golden Spray (<i>by Margaret Maidment</i>)	50
Hot Gossip (<i>by Margaret Maidment</i>)	51
Ironing (<i>by Margaret Maidment</i>)	52
Ironing (<i>by Margaret Maidment</i>)	53
Reclining Nude with Rose (<i>by Henri Matisse</i>)	54
Oystercatchers and Mallard (<i>by Alan Peters</i>)	55
La toilette de la Mere (<i>by Picasso</i>)	56
Rosa Gallica caerulea (<i>by P.J. Redoute</i>)	57
Rosa Gallica officialis (<i>by P.J. Redoute</i>)	58
Rosa Musca alba (<i>by P.J. Redoute</i>)	59
Rosa Pimpinelli floria rubra (<i>by P.J. Redoute</i>)	60
Center Piece (<i>by Bob Saunders</i>)	61
Cool Interior (<i>by Bob Saunders</i>)	62
Orangery (<i>by Bob Saunders</i>)	63
Tulips (<i>by Bob Saunders</i>)	64
Fidellio III (<i>by David Shaw</i>)	65
Classic Yachts off The Needles (<i>by Martin Swan RSMA</i>)	66
Js off The Squadron (<i>by Martin Swan RSMA</i>)	67
Old Master Victorian Print. (<i>by unknown</i>)	68
Bournemouth Pier from the East Cliff. (<i>by unknown</i>)	69

Invalids Walk, Bournemouth. <i>(by unknown)</i>	70
Sketches at Ventnor, Isle of Wight <i>(by unknown)</i>	71
The Gardens, Bournemouth. <i>(by unknown)</i>	72
Charles James and Henrietta <i>(by A van Dyck)</i>	73
Four Coastal Studies <i>(by Peter Wright)</i>	74

King's Colledge to Wit- a practical Essay



Artist: unknown

Medium: Art Litho print

Price: £40

image size 360mm x 240mm

mount size 450mm x 345mm

open edition.

One of a pair with The Field of Battersea, commemorating the foundation of King's College and The Duke of Wellington's involvement.

There are also unframed at £20 each

The Field of Battersea



Artist: unknown

Medium: Art Litho print

Price: £40

image size 360mm x 240mm

mounted 450mm x 345mm

This is a modern facsimily of the original engraving.

One of a pair of prints commemorating the founding of King's college and The Duke of Wellington's involvement.

Note unframed print £20.

The South Prospect of Scarborough in the county of York



Artist: unknown

Medium: Hand coloured engraving

Price: £350

18th Century, Published by S & N Buck.

Framed tight to image

835 x 310mm approx.image size

Ventnor Esplanade



Artist: unknown

Medium: Engraving

Price: £25

Rare Illustrated London News type print

View of Blackfriars Bridge



Artist: unknown

Medium: Hand coloured engraving

Price: £190

Late 18th century hand coloured engraving.

After E. Dayes engraved by T Tagg

Published by I. Stockdale Piccadilly

Image size 240mm x 150mm

Conserved and re-framed and mounted with line.

One of four but by different artists and engravers.

View of Buckingham House



VIEW of BUCKINGHAM HOUSE.
Engraved from a Picture by E. Dayes.

Artist: unknown

Medium: Hand coloured engraving

Price: £210

After E. Dayes engraved by W. Knight.

Published by I. Stockdale Piccadilly

Image size 240mm x 150mm

Conserved and re-framed with lined mount

View of Chelsea Hospital



Artist: unknown

Medium: Hand coloured engraving

Price: £210

Late 18th century hand coloured engraving.

After E. Dayes engraved by T Tagg

Published by I. Stockdale Piccadilly

Image size 240mm x 150mm

Conserved and re-framed and mounted with line

View of Westminster Bridge



Artist: unknown

Medium: Hand coloured engraving

Price: £210

Late 18th century hand coloured engraving.

After E. Dayes engraved by T Tagg

Published by I. Stockdale Piccadilly

Image size 240mm x 150mm

Conserved and re-framed and mounted with line

Beware of the Dog



Artist: Ernest Aris

Medium: Colour half tones

Price: £15

mounted overall size 290mm x 350mm

Note

One of four different print of the adventures of these rabbits(not shown). If interested do get in touch.

Hedgerow Fairy.



Artist: Cicely Mary Barker

Medium: Colour half tones

Price: £15

mounted overall size 245mm x 295mm

one of seven different prints depicting besides others Holly Fairy, Lilac Fairy and Elderflower Fairy.

Ouragan Ventis



Artist: F Boulzen

Medium: Engraving

Price: £490

Engraver I Coelemans

1704

Modern frame. Numbered 34 in corner

450 x 350mm approx.

Conviviality at Bob Sawyers



Artist: Hablot Knight Browne

Medium: Etching

Price: £30

Image size approx 110mm x 130mm.

Mount size 245mm x 310mm

Mounted with a lime wash.

Mrs Muzzle's Kitchen



Artist: Hablot Knight Browne

Medium: Etching

Price: £30

Image size approx 110mm x 130mm

Mount size 245mm x 310mm

Mounted with a lime wash

untitled



Artist: Miles Burkett-Foster

Medium: Engraving

Price: £35

Modern frame. Showing donkey riding.

Image size 140 x100mm

untitled



Artist: Miles Burkett-Foster

Medium: Engraving

Price: £35

Modern frame. Showing berry picking.

Image size 140 x100mm

Hadleigh Castle near the Nore



Artist: John Constable RA

Medium: Mezzotint

Price: £210

David Lucas engraved this plate 1831 as one of 22 plates comprising Constable's English Landscape Scenery.

Prints are considered generally as inferior copies of original work. The close collaboration between these two artists, one of being a giant of painting demonstrates that prints can be conceived and produced as fine art.

Plate size 250mm x 180mm

New frame and mount

The Garland Sculpture, Isle of Wight



Artist: Peter Davies

Medium: Block print

Price: £180

image size 310mm x 200mm

Reduction block print on paper

Titled, numbered 2 of 6, signed and dated '10 in pencil

Early Dentistry



Artist: Ger. Doni

Medium: Engraving

Price: £10

image size 135mm x 170mm

some damage to bottom left of print.

Engraved by D J Pound

The Boys Arch



Artist: Robert Charles Dudley

Medium: Lithograph

Price: £70

Eton School & "The Boys Arch", visit paid by H.R.H The Princess Alexandra of Denmark on March 9th 1863.

Hand coloured lithograph, 1864.

Image size 290mm x 222mm. Plate cut to image, with slight damage to lower margin.

Marshmallows



Artist: Gil Elvgren

Medium: Art Litho print

Price: £15

Framed to the period. Image size 130mm x 190mm

One of five by this artist.

Other pin up artists include Harry Ekman and Withers at comparable prices.

Fish and Asparagus



Artist: Annabel Fairfax SWA

Medium: Giclee

Price: £250

Fish and Asparagus Framed

There are two edition each in suite of four
one of four limited editions of 50

Paper size A3, Image size app. 205mm x 205mm

Price £80, £120 framed

or AS SHOWN

one of four limited editions of 10

paper size 720mm x 720mm, image size app. 610mm x 610mm

Framed.

£180 print only

All prints are signed, titled, and numbered by the artist.

Teapot and White Orchids



Artist: Annabel Fairfax SWA

Medium: Giclee

Price: £250

Teapot and White Orchids

There are two editions in a suite of four

one of four limited edition of 50

Paper size A3, image size app. 205mm x 205mm

£120 or £80 print only

or AS SHOWN

one of four limited edition of 10

paper size 720mm x 720mm, image size app. 610mm x 610mm

Framed.

£180 print only

All prints are signed, titled and numbered by the artist.

Tulips and Waders



Artist: Annabel Fairfax SWA

Medium: Giclee

Price: £250

There are two editions of this print in a suite of four

One of a limited editions of 50

paper size A3 image size approx. 205mm x 205mm

Framed £120 or print only £80

or AS SHOWN

One of a limited edition of 10

paper size 720mm x 720mm, image size 610mm x 610mm

Framed

£180 print only

All prints are signed, titled, and numbered by the artist.

Waders & Cherries



Artist: Annabel Fairfax SWA

Medium: Giclee

Price: £90

One of a suite of four prints.

The large formate edition is sold out.

The small formate, image size 8 inches x 8 inches is still available.

Price £90

Framed from £130

Fortress, Les Baux de Provence



Artist: Joseph Fereday RE

Medium: Etching/Engraving

Price: £150

Limited edition 11/50. Image size 32.5cm x 46.5cm

Vitrolle Provence



Artist: Joseph Fereday RE
Medium: Etching/Engraving
Price: £90

Limited edition 10/50. Image size 35.25cm x 49.50cm
numbered /titled/signed and dated 1975.

Jo Fereday lived and worked in Brading on the Isle of Wight and taught at Portsmouth college of Art.

The Gardner



Artist: Anne Gillmore Carter

Medium: Giclee

Price: £30

Image size 110mm x 150mm.

This is a facsimile print of a popular wood cut
1 of 50. Titled and signed in pencil.

Belgrave Road, Ventnor



Artist: William Gray Snr.

Medium: Art Litho print

Price: £50

Image size 530mm x 250mm

Mounted

Titled and numbered 192 of 195 in pencil

Off Yarmouth



Artist: William Gray Snr.

Medium: Art Litho print

Price: £40

image size 475mm x 185mm

Titled and numbered 145 of 150 in pencil
double mounted.

titled and numbered 103 of 150 in pencil.

Note there is a second numbered 145 unmounted at £30

Sandown Bay



Artist: William Gray Snr.

Medium: Art Litho print

Price: £50

image size 450mm x 230mm

double mounted 650mm x 445mm

Titled and numbered 63 of 175 in pencil

Note there are two other prints 106 and 98 unmounted at £40 each

Sandown Bay



Artist: William Gray Sr.

Medium: Lithograph

Price: £20

nnnnnn

Sunset Ventnor Cove



Artist: William Gray Snr.

Medium: Art Litho print

Price: £40

image size 450mm x 170mm

double mounted 660mm x 375mm

Titled and numbered 51 of 175

Mr Garrick in Richard 3rd



Artist: Hogarth

Medium: Engraving

Price: £30

From an original portrait by Hogarth T Clerk engraved this book plate.

Plate size 155mm x 120mm

Charles Wingfield Knight



Artist: Hans Holbein

Medium: Art Litho print

Price: £18

Early 19th century Art Litho Print of Hans Holbein Drawing.

Published by Franz Hanstaengl London printed in Munich

John Colet Dean of St. Paul's



Artist: Hans Holbein

Medium: Art Litho print

Price: £15

Early 19th century Art Litho Print of Hans Holbein Drawing.

Published by Franz Hanstaengl London printed in Munich.

King Henry Eight



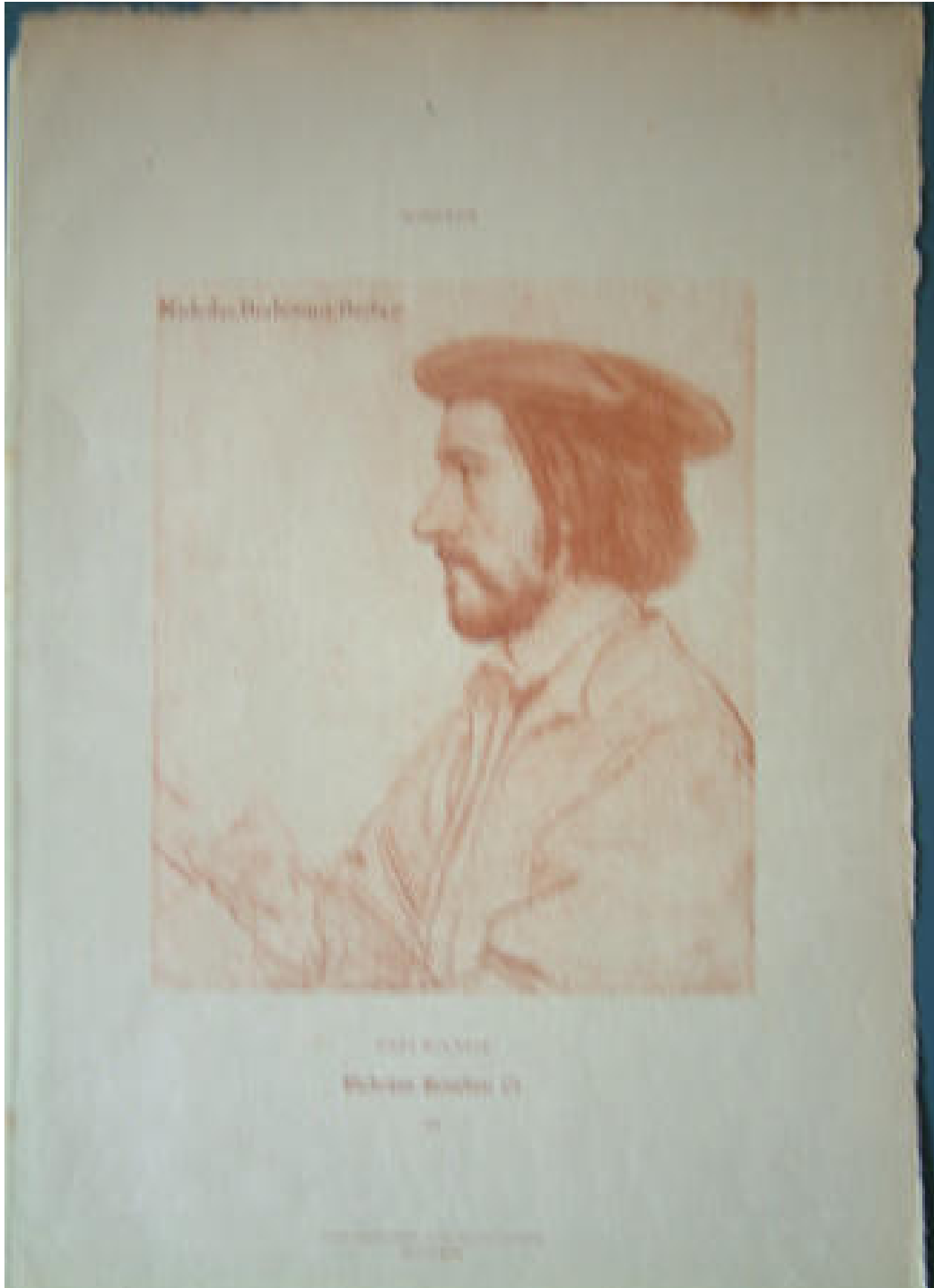
Artist: Hans Holbein

Medium: Engraving

Price: £30

Book plate engraved by W T Fry of Holbein's painting

Nicholas Borbon, Poet



Artist: Hans Holbein

Medium: Art Litho print

Price: £18

Early 19th century Art Litho Print of Hans Holbein Drawing.

Published by Franz Hanstaengl London printed in Munich.

untitled



Artist: John Kay of Edinburgh

Medium: Engraving

Price: £55

well mounted.

Plate size 70mm x 50mm

New frame

untitled



Artist: John Kay of Edinburgh

Medium: Engraving

Price: £55

Well mounted.

with monogram K and dated 1784 to plate.

Plate size 70mm x 50mm

New frame

Untitled



Artist: John Kay of Edinburgh

Medium: Etching

Price: £55

Untitled caricature of the late 18th early 19th century

Plate size 75mm x 85mm

New frame

Untitled



Artist: John Kay of Edinburgh

Medium: Engraving

Price: £55

Untitled caricature late 18th early 19th century.

Plate size 82mm x 92mm

New frame

Old Undercliff Road



Artist: C J Knox

Medium: Art Litho print

Price: £35

image size 470mm x 160mm
mounted

This painting was reproduced as a limited edition fine art print by Robin McInnes in 1990's along with the numerous William Gray Snr. prints

Titled1866 and numbered in pencil 110 of 150.

Note there is another with some damage ,unmounted at £9.

Old Undercliff Road



Artist: C J Knox

Medium: Lithograph

Price: £35

Limited edition 66/150

Midsummer Nights Dream



Artist: Sir Edwin Landseer FRA

Medium: Mezzotint

Price: £1250

Engraver Samuel Cousins RA

Original frame. Published 1855 N.Y. USA

920 x 630 mm

It is said that Edwin Landseer was so pleased with Cousin's mezzotint of his painting based on Shakespear's playthat ,upon seeing it, the painter recovered from the debilitating depression from which he'd been suffering.

Beachy Head



Artist: Rowland Langmaid

Medium: Etching

Price: £325

Framed. Image size 290mm x 70mm. titled and signed in pencil.

Self portrait of Sir Thomas Lawrence



Artist: Sir Thomas Lawrence

Medium: Mezzotint

Price: £450

Engraver Samuel Cousins

Artist proof signed to mount. Published 1830

580 x 420mm approx

Albert



Artist: Margaret Maidment

Medium: Block print

Price: £48

Limited edition 1/30 Image size 29.5cm x 21cm
Rare print by this popular Isle of Wight print maker

Cards



Artist: Margaret Maidment

Medium: Block print

Price: £50

10 of 10 and signed, in pencil.

330mm x 330mm

Cards



Artist: Margaret Maidment

Medium: Block print

Price: £50

10/10 Limited edition Image size 32cm x 32cm

Golden Spray



Artist: Margaret Maidment

Medium: Block print

Price: £48

Limited edition 4/30

Image size 29.5cm x 21cm

A rare print by this popular Isle of Wight printer

Hot Gossip



Artist: Margaret Maidment

Medium: Silkscreen

Price: £125

Artist proof of limited edition silkscreen. It is not known how large this edition would have been or whether there are other prints of this edition.

Ironing



Artist: Margaret Maidment

Medium: Block print

Price: £52

Limited edition 6/11. Image size 33cm x 30cm

Ironing



Artist: Margaret Maidment

Medium: Block print

Price: £52

Numbered 7 of 11 and signed, in pencil.

300mm x 320mm

Reclining Nude with Rose



Artist: Henri Matisse

Medium: Giclee

Price: £95

An open edition giclee print of a forgery by the celebrated Hungarian-born Elmyr de Hory

Oystercatchers and Mallard



Artist: Alan Peters

Medium: Block print

Price: £15

mounted overall size 350mm x 290mm

An ink jet reproduction of an original block print published as a small unnumbered edition.

Titled with monogram in pencil by the artist.

Three others (unmounted) available £12 each

La toilette de la Mere



Artist: Picasso

Medium: Etching

Price: £300

Recent late strike, not numbered, cotton paper.

This is attributed to Picasso's blue period.

Plate size 230mm x 173 mm

There are two other imprints.

An imprint taken I believe from the same plate when it measured 236mm x 176mm and attributed to "the unnumbered edition of 250 published by A Volland Paris 1913 sold at Bonhams print sale 16th July 2013 for £2500.

Rosa Gallica caerulea



Artist: P.J. Redoute

Medium: Coloured stipple engraving

Price: £60

Early 19th century Rose Prints. Coloured stipple engraving

P.J. Redoute artist E. Talbeaux engraver

Remand edition

345mm x 240mm plate size; 405mm x 295mm paper size

Rosa Gallica officinalis



Artist: P.J. Redoute

Medium: Coloured stipple engraving

Price: £60

Early 19th century Rose Prints. Coloured stipple engraving

P.J. Redoute artist E. Talbeaux engraver

Remand edition

345mm x 240mm plate size 405mm x 295mm paper size

Rosa Musca alba



Artist: P.J. Redoute

Medium: Coloured stipple engraving

Price: £60

Early 19th century Rose Prints. Coloured stipple engraving

P.J. Redoute artist E. Talbeaux engraver

Remand edition

345mm x 240mm plate size 405mm x 295mm paper size

Rosa Pimpinelli floria rubra



Artist: P.J. Redoute

Medium: Coloured stipple engraving

Price: £60

Early 19th century Rose Prints. Coloured stipple engraving

P.J. Redoute artist E. Talbeaux engraver

Remand edition

345mm x 240mm plate size 405mm x 295mm paper size

Center Piece



Artist: Bob Saunders

Medium: Silkscreen

Price: £160

Framed in square molding number 16/200

510 x 405mm

Cool Interior



Artist: Bob Saunders

Medium: Silkscreen

Price: £160

Framed in rounded molding numbered 2/250

Image size 430 x 357mm

Orangery



Artist: Bob Saunders

Medium: Silkscreen

Price: £160

Framed in square molding number 16/200

510 x 405mm

Tulips



Artist: Bob Saunders

Medium: Silkscreen

Price: £160

Framed in square molding numbered 50/200

430 x 357mm

Fidellio III



Artist: David Shaw

Medium: Silkscreen

Price: £250

Numbered 23/28 fine frame and mount

720 x 630mm

Classic Yachts off The Needles



Artist: Martin Swan RSMA

Medium:

Price: £60

40/150 limited edition giclee print.

Image size 28cm x 55.80cm

An iconic marine image of the Needles and classic yachts.

Js off The Squadron



Artist: Martin Swan RSMA

Medium: Giclee

Price: £65

Limited edition 39/150. Image size 39.5cm x 58.80cm
Another iconic Cowes scene with J-Class yachts.

Old Master Victorian Print.



Artist: unknown

Medium: Engraving

Price: £20

framed and mounted Victorian book plate of old master
overall size 240mm x 190mm

We have a great variety of these prints that could be framed to meet personal requirements. Price negotiable.

Bournemouth Pier from the East Cliff.



Artist: unknown

Medium: Lithograph

Price: £20

mounted overall size 360mm x 315mm

One of three with The Gardens & Invalids Walk

Invalids Walk, Bournemouth.



Artist: unknown

Medium: Lithograph

Price: £20

mounted overall size 360mm x 310mm

one of three with The Gardens & Pier from East Cliff

Sketches at Ventnor, Isle of Wight



Artist: unknown

Medium: Engraving

Price: £25

image size 225mm x 305mm

mounted 410mm x 490mm

The Gardens, Bournemouth.



Artist: unknown

Medium: Lithograph

Price: £20

mounted overall size 360mm x 310mm

one of three with Pier from East Cliff & Invalids Walk

Charles James and Henrietta



Artist: A van Dyck

Medium: Engraving

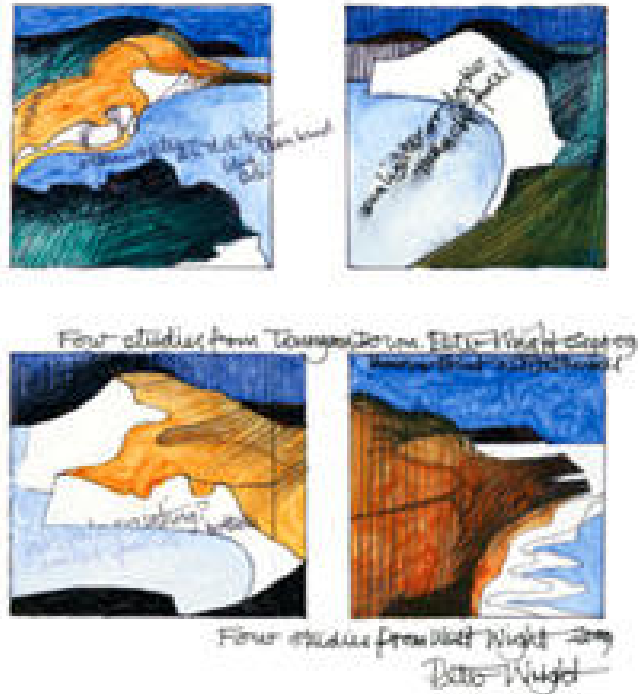
Price: £30

an engraving by A H Payne circa 1840 Steel engraver mounted over all size 280mm x 255mm, Plate size 190mm x 170 approx.

Note:

Many other Victorian steel engravings of old masters at various prices(not shown).Do enquire.

Four Coastal Studies



Artist: Peter Wright

Medium: Giclee

Price: £70

"Four Coastal Studies" is the title the artist has given to a group of coloured sketches, with notes, that were used prior to his oil paintings. They convey the essence of the larger works.

The edition is limited to one hundred and fifty prints. The colour printing process is giclee on Hahnemuhle fine art paper size A3. The image size is approximately twenty centimeters square.

Numbers 1 to 25 have already been sold.

Burrows Prints
Lynchens Cottage
High Street
Bembridge
Isle of Wight
PO35 5SF

Tel (+44) 01983 873917
(+44) 07890 233339